

NEW IN STOCK

Pedders SportsRyder Kevlar Ceramic Brake Pads

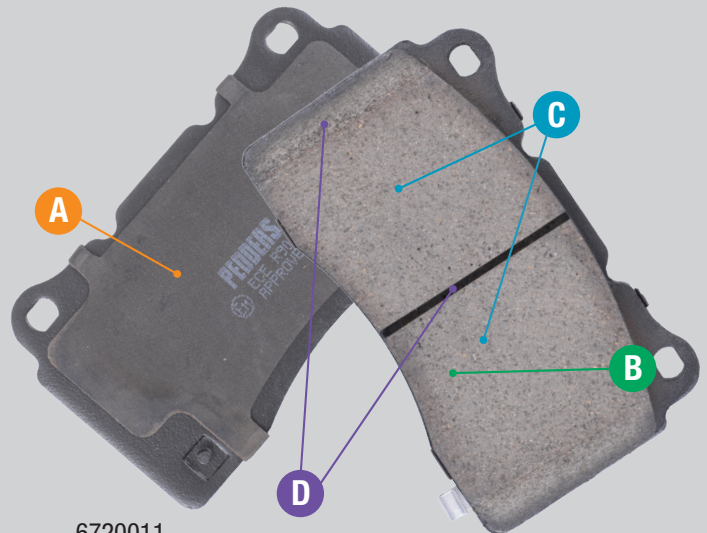
Part #	Make & Model	F/R
6720011	Subaru Impreza Wrx Sti 2002-2014	Front
6720024	Subaru Wrx 1998-2007 Brembo	Front
6720025	Subaru Wrx 2001-2007 Brembo	Rear
6720023	Subaru Impreza Wrx Sti 2002-2014	Rear

Pedders SportsRyder Kevlar Ceramic brake pads are specifically designed for Sports, Performance and Prestige driving enthusiasts. Pedders SportsRyder ceramic brake pads provide superior stopping power and maintaining braking efficiency at increased temperatures.



Features and Benefits:

- Specifically engineered to hold a high coefficient of friction under extreme usage.
- Positive moulded and hot pressed at over 6,000 psi ensuring consistent friction density.
- Low noise, consistent performance, longer lasting and rotor friendly.
- True Kevlar ceramic formula that keeps wheels cleaner.
- 20% more stopping power.
- Shimtech dual rubber backed shims offering 6 times more noise reduction as compared to steel shims.
- Thermal scorched for fast break-in.
- Environmentally friendly with low copper content.
- Outstanding braking performance.
- Approved ECE R90 regulation.
- Kevlar-enhanced to prevent high temperature glazing resulting in brake fade.



6720011

Features and Benefits:

- A** Shimtech™ advanced shims to reduce vibration and brake noise.
- B** Kevlar Ceramic Friction formula for outstanding braking performance in all conditions.
- C** Ultra low dusting pads designed to keep your wheels clean.
- D** Slotted and chamfered friction material to reduce brake noise.

